



**Milton Terrace
North Shields
NE29 0PB**

£95,950

Stunning two bedroom ground floor flat, pleasantly located on this popular street close to local colleges, amenities and bus routes. Benefits from gas radiator central heating and UPVC double-glazing. The accommodation on offer comprises of entrance hallway, spacious lounge with feature fireplace, modern fitted kitchen, two bedrooms and a modern fitted bathroom suite. Externally there is a rear yard.



PART GLAZED ENTRANCE DOOR

HALLWAY

Tiled floor, understair cupboard and radiator.

LOUNGE 4.39m(14'5") x 3.61m(11'10")

Well presented lounge with feature fireplace with electric fire, UPVC double-glazed window and radiator.

KITCHEN 4.39m(14'5") x 2.11m(6'11")

Modern fitted kitchen comprising of base, wall and drawer units, roll edge worktops, sink unit with mixer taps, laminate flooring, part panelled walls and part tiled walls, central heating boiler, UPVC double-glazed window and rear door.

BEDROOM 1 5.18m(17'0") x 3.76m(12'4")

Spacious master bedroom with feature UPVC double-glazed bay window and radiator.

BEDROOM 2 3.28m(10'9") x 2.24m(7'4")

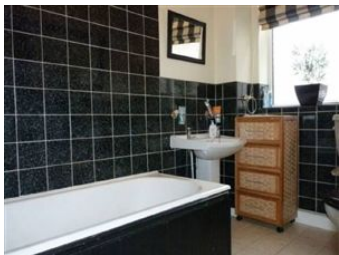
UPVC double-glazed window, radiator.

BATHROOM

Modern bathroom suite with panelled bath, low level w.c, pedestal washbasin, part tiled walls, radiator and double-glazed window.

EXTERNALLY

Rear yard.



BHP Adamsons and BHP Home are trading names of BHP Home Limited. BHP Home Limited is not regulated by the Solicitors Regulation Authority. It is a subsidiary company of Blackett Hart & Pratt LLP who are regulated by the Solicitors Regulation Authority. We aim to produce accurate and reliable Sales Particulars. However, they should not be relied upon as statements or representations of fact. Our details do not constitute any form of offer or contract. All information provided within our details is without responsibility on our part. Please note that we have not tested appliances, equipment, fixtures, fittings or services and therefore cannot verify working order. Although we try to ensure accuracy regarding measurements, we do not use sonic measuring equipment! all sizes are approximate and should not be relied upon for any other purposes other than a guide before viewing. We strongly advise that yourselves or your advisors verify any information we provide especially if there is any point which is of particular importance to you. Please contact us and we will be pleased to check the information. Do so particularly if contemplating travelling some distance. A final inspection before exchange of contracts is recommended.

The mention of any appliances and/or services within these sales particulars does not imply that they are in full and efficient working order. All measurements have been taken using a sonic tape measure and therefore may be subject to a small margin of error. Whilst we endeavour to make our sales details accurate and reliable, if there is any point which is of particular importance to you, please contact us and we will be pleased to check the information. Do so particularly if contemplating travelling some distance.

Blackett Hart & Pratt LLP is a limited liability partnership. Registered in England and Wales. Registration no. OC319059. Registered office: Westgate House, Faverdale, Darlington, DL3 0PZ. Regulated by the Law Society. Authorised and regulated by the Financial Services Authority. Any reference to a partner of Blackett Hart & Pratt LLP means a member of Blackett Hart & Pratt LLP or an employee or consultant of Blackett Hart & Pratt LLP with equivalent standing and qualifications.

Registered Office
11/12, Northumberland
Square, North Shields,
Tyne and Wear, NE30
1PY
Tel: 0191 2928804
Email:
sales@bhphome.co.uk
www.bhphome.co.uk