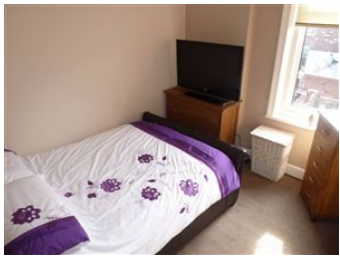
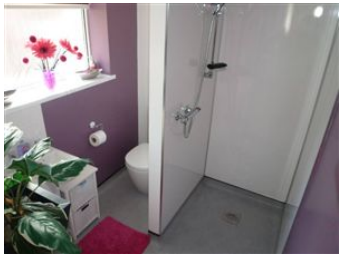
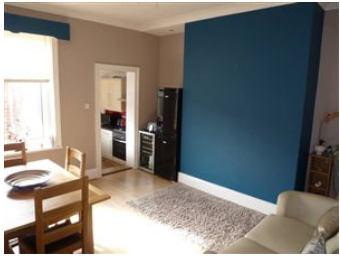




**Belford Terrace
North Shields
NE30 2BZ**

£115,000

Well maintained three bedroom first floor terrace flat situated in this sought after area near local amenities, transport links and local schools. Should interest first time buyers. Benefits from double glazing, central heating. The accommodation on offer comprises of entrance lobby, first floor landing area, spacious lounge, modern kitchen, three bedrooms, master with feature bay window and fitted shower room. Private yard to rear. Call to view internally.



Registered Office
11/12, Northumberland
Square, North Shields,
Tyne and Wear, NE30
1PY
Tel: 0191 2928804
Email:
sales@bhphome.co.uk
www.bhphome.co.uk

TIMBER ENTRANCE DOOR TO:

LOBBY

Staircase to first floor

FIRST FLOOR LANDING AREA

Cupboard

LOUNGE 4.34m(14'3") x 3.25m(10'8")

Laminate floor. Single radiator. Cornicing to ceiling. UPVC window

KITCHEN 2.26m(7'5") x 1.83m(6'0")

Modern fitted kitchen comprising of base and wall units, roll edge worktops, single drainer sink unit with hot and cold mixer taps, integrated oven and hob, tiled splashbacks, UPVC double-glazed window and spotlights to ceiling

SHOWER ROOM

Open wet room, power shower, low level w,c, pedestal washbasin, UPVC double-glazed window, panelled shower area and spotlights to ceiling.

BEDROOM 1 4.32m(14'2") x 3.78m(12'5")

UPVC double-glazed bay window and radiator.

BEDROOM 2 3.10m(10'2") x 2.67m(8'9")

UPVC double-glazed window and radiator.

BEDROOM 3 2.82m(9'3") x 2.67m(8'9")

UPVC double-glazed window and radiator.

EXTERNALLY

Rear yard.

BHP Adamsons and BHP Home are trading names of BHP Home Limited. BHP Home Limited is not regulated by the Solicitors Regulation Authority. It is a subsidiary company of Blackett Hart & Pratt LLP who are regulated by the Solicitors Regulation Authority. We aim to produce accurate and reliable Sales Particulars. However, they should not be relied upon as statements or representations of fact. Our details do not constitute any form of offer or contract. All information provided within our details is without responsibility on our part. Please note that we have not tested appliances, equipment, fixtures, fittings or services and therefore cannot verify working order. Although we try to ensure accuracy regarding measurements, we do not use sonic measuring equipment' all sizes are approximate and should not be relied upon for any other purposes other than a guide before viewing. We strongly advise that yourselves or your advisors verify any information we provide especially if there is any point which is of particular importance to you. Please contact us and we will be pleased to check the information. Do so particularly if contemplating travelling some distance. A final inspection before exchange of contracts is recommended.

The mention of any appliances and/or services within these sales particulars does not imply that they are in full and efficient working order. All measurements have been taken using a sonic tape measure and therefore may be subject to a small margin of error. Whilst we endeavour to make our sales details accurate and reliable, if there is any point which is of particular importance to you, please contact us and we will be pleased to check the information. Do so particularly if contemplating travelling some distance.

Blackett Hart & Pratt LLP is a limited liability partnership. Registered in England and Wales. Registration no. OC319059. Registered office: Westgate House, Faverdale, Darlington, DL3 0PZ. Regulated by the Law Society. Authorised and regulated by the Financial Services Authority. Any reference to a partner of Blackett Hart & Pratt LLP means a member of Blackett Hart & Pratt LLP or an employee or consultant of Blackett Hart & Pratt LLP with equivalent standing and qualifications.