



**Brahman Avenue  
North Shields  
NE29 6UD**

**£69,950**

Executive two bedroom lower flat close to Metro and local ferry landing within walking distance to many local facilities, well presented throughout, electric storage heating, lounge/dining area, modern fitted kitchen with integrated appliances, two double bedrooms, modern bathroom suite, communal gardens and secured entry system, double glazing. Allocated parking bay. last chance to buy offers welcome



Communal secured entry system to: Communal Hallway: Entrance door to: Apartment:  
HALLWAY

Night storage heater, storage cupboard and additional storage cupboard housing tank.

LOUNGE/DINING AREA 4.17m(13'8") x 5.89m(19'4")

(Maximum L shaped measurement). Three UPVC double-glazed windows, night storage heater and opening through to kitchen.

KITCHEN 2.64m(8'8") x 1.80m(5'11")

Modern range of base, wall and drawer units, roll edge worktops, single drainer sink unit with hot and cold mixer taps, plumbing for automatic washing machine, integrated electric oven, hob and extractor fan, tiled splashbacks, UPVC double-glazed window and laminate flooring.

BEDROOM 1 3.53m(11'7") x 2.62m(8'7")

Night storage heater, two UPVC double-glazed window and door through to bathroom.

BATHROOM

Access from hallway or bedroom 1. Modern suite comprising of bath, pedestal washbasin, low level W.C, tiled splashbacks, UPVC double-glazed window, airing cupboard, wall heater, laminate flooring and extractor fan.

BEDROOM 2 3.53m(11'7") x 2.16m(7'1")

Spacious double bedroom with radiator and UPVC double-glazed window.

EXTERNALLY

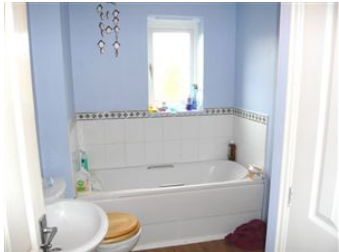
Communal garden area and allocated parking bay.



BHP Adamsons and BHP Home are trading names of BHP Home Limited. BHP Home Limited is not regulated by the Solicitors Regulation Authority. It is a subsidiary company of Blackett Hart & Pratt LLP who are regulated by the Solicitors Regulation Authority. We aim to produce accurate and reliable Sales Particulars. However, they should not be relied upon as statements or representations of fact. Our details do not constitute any form of offer or contract. All information provided within our details is without responsibility on our part. Please note that we have not tested appliances, equipment, fixtures, fittings or services and therefore cannot verify working order. Although we try to ensure accuracy regarding measurements, we do not use sonic measuring equipment' all sizes are approximate and should not be relied upon for any other purposes other than a guide before viewing. We strongly advise that yourselves or your advisors verify any information we provide especially if there is any point which is of particular importance to you. Please contact us and we will be pleased to check the information. Do so particularly if contemplating travelling some distance. A final inspection before exchange of contracts is recommended.

The mention of any appliances and/or services within these sales particulars does not imply that they are in full and efficient working order. All measurements have been taken using a sonic tape measure and therefore may be subject to a small margin of error. Whilst we endeavour to make our sales details accurate and reliable, if there is any point which is of particular importance to you, please contact us and we will be pleased to check the information. Do so particularly if contemplating travelling some distance.

Blackett Hart & Pratt LLP is a limited liability partnership. Registered in England and Wales. Registration no. OC319059. Registered office: Westgate House, Faverdale, Darlington, DL3 0PZ. Regulated by the Law Society. Authorised and regulated by the Financial Services Authority. Any reference to a partner of Blackett Hart & Pratt LLP means a member of Blackett Hart & Pratt LLP or an employee or consultant of Blackett Hart & Pratt LLP with equivalent standing and qualifications.



## Registered Office

11/12, Northumberland  
Square, North Shields,  
Tyne and Wear, NE30  
1PY

Tel: 0191 2928804

Email:

sales@bhphome.co.uk

[www.bhphome.co.uk](http://www.bhphome.co.uk)